



College of Integrative Studies
10 Canning Rise
Singapore 179873

cis.smu.edu.sg

[@sgsmu.cis](https://www.facebook.com/smsmu.cis)

[@sgsmu.cis](https://www.instagram.com/smsmu.cis)

Information is correct at print in January 2023



**WHY SMU COLLEGE OF
INTEGRATIVE STUDIES?
IT'S INTEGRATIVE,
INTERDISCIPLINARY,
INDIVIDUALISED AND IN
SYNC WITH YOUR FUTURE.**

College of
Integrative Studies

REDEFINING SPECIALISATION: INTERDISCIPLINARY & INTEGRATIVE STUDIES

Future economies and the future of work will be complex, dynamic; domains will be overlapping, and solutions will have to be interdisciplinary. Cybersecurity, fintech and urban sustainability are just some of these areas where traditional silos of expertise have been disrupted and recombined. This new reality calls for a new understanding of specialisation, where skillsets that are not normally wielded by the same person must now be integratively deployed. The CIS will guide our students to cultivate these unique combinations of skills to operate in the modern and frontier industries of the economy.



“The College of Integrative Studies is SMU’s response to the higher education needs of the 21st century. Our Individualised Major is the first of its kind in Singapore and will give students an unprecedented ability to design their own major, and to do so with the interdisciplinary synthesis that best fits their interests and the future job market. Our graduates will possess an integrative and cross-domain toolkit to navigate the frontier industries of the modern economy, and to confidently ride the waves of change ahead.

Our graduates have the intellectual disposition to stay ahead of the social, environmental and economic disruptions they will encounter through the course of their careers.

The new SMU College of Integrative Studies will be an incubator of interdisciplinary and integrative research-led teaching. We will empower our students to redefine the conventional, single-disciplinary definition of “specialisation” and journey with them to deliver unprecedented solutions for the realities of the world we live in.”

Professor Elvin Lim
Dean, College of Integrative Studies

CURRICULUM

YEAR 1

- Reserve a seat in up to 2 programmes

- Enjoy the flexibility to explore different courses before deciding on a destination degree programme

END OF YEAR 1

Apply to enrol into the Bachelor of Integrative Studies / Individualised Major
(Direct entry for those with reserved seat)

Exercise option to take up a reserved seat

Apply to join another SMU degree programme different from the reserved ones

Option to apply for an Individualised Second Major

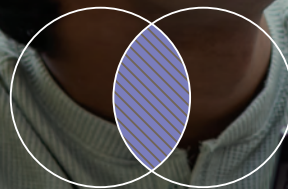
Professional Track

Research Track

YEAR 4

Graduate from SMU

REASONS TO JOIN THE COLLEGE OF INTEGRATIVE STUDIES



INTERDISCIPLINARY & INTEGRATIVE LEARNING

Learn to inter-weave and synthesise knowledge across multiple domains



DESIGN YOUR INDIVIDUALISED MAJOR

* FIRST AND ONLY INDIVIDUALISED MAJOR IN SINGAPORE

Chart and create your own unique learning path that is aligned with your aspirations, creativity and talents



ONE-TO-ONE FACULTY ADVISOR & INDUSTRY MENTOR

Curate a robust study plan with the support of your Faculty Advisor and benefit from personalised guidance by your Industry Mentor*



STUDENT-FACULTY RATIO OF 1:8

Learn from world-class scholars and practitioners with an unparalleled student-faculty ratio



STRONG CAREER PROSPECTS

Gain a competitive edge in the rapidly changing job market. Set yourself apart with a unique programme of study that addresses a current or emerging industry need

* Students on the Professional track will be assigned an Industry Mentor in addition to a Faculty Advisor

PROGRAMMES & CURRICULUM

1 DEFERRED DECLARATION OF DEGREE (D3)

One-year introduction to the different degree programmes that SMU has to offer. Students enjoy the flexibility to explore their interests and engage in self-directed learning, enabling an informed decision on the destination degree programme.

On admission, students can reserve seats in up to 2 degree programmes across SMU schools, including the Bachelor of Integrative Studies (BIS).

Toward the end of the D3 year, students will make an informed decision as to:

Embarking on the Bachelor of Integrative Studies (BIS) and designing their Individualised Major in consultation with faculty

Activating their reserved seat at another SMU School

OR

Applying to another SMU degree programme that is different from the reserved ones at admission, subject to approval

Students who enter SMU on the D3 will graduate from their undergraduate degree within 4 years, the standard SMU degree programme length.

2 BACHELOR OF INTEGRATIVE STUDIES | INDIVIDUALISED MAJOR

CURRICULUM OVERVIEW (36 COURSE UNITS):

CORE CURRICULUM
(12 COURSE UNITS)

+

Individualised Major Core & Electives (16 Course Units)

+

Free Electives (8 Course Units)

CORE CURRICULUM (12 CUs)

The SMU Core Curriculum will initiate undergraduates into their journey to become fully realised SMU graduates. It is based on the following three pillars:

CAPABILITIES (6 CUs)

The Capabilities pillar equips students with 21st century skills necessary to thrive in an increasingly digitised and data-driven working environment.

Numeracy (1 CU)

Choose one from:

- Calculus
- Introductory Statistics
- Introduction to Statistical Theory

Modes of Thinking (1 CU)

Choose one from:

- Critical Thinking in the Real World
- Computational Thinking
- Managing in a VUCA Context

Managing (2 CU)

Choose two courses from a range of courses such as:

- Spreadsheet Modelling and Analytics
- Management Communication
- Working and Managing in a Digital World
- Business, Government and Society
- Collaborative Governance
- Leadership and Team Building

Writing and Reasoning (1 CU)

Internship (1 CU)

COMMUNITIES (4 CUs)

The Communities pillar aims to help students understand the economic, technological and cultural systems that structure our interactions with our communities.

Economics and Society (1 CU)

Technology and Society (1 CU)

Choose one from a range of courses such as:

- Digital Cultures
- Science, Environment, and Empire
- Climate, History and Society
- AI and Humanity
- Technological Solutions to Urban Challenges
- Climate Change: Global and Local Solutions
- Science and Technology Studies: Where Science Meets Society

Cultures of the Modern World (1 CU)

Choose one from a range of courses such as:

- Urban Cultures
- Film in Southeast Asia
- Singapore: Imagining the Next 50 Years
- Politics of South-East Asia
- Scratches on their Minds: Images of Asia in Hollywood
- Sustainable Cities
- Foreign Languages

Community Service (1 CU)

CIVILISATIONS (2 CUs)

The Civilisations pillar immerses students in the fundamental debates that cut across time and space, preparing them to engage in critical dialogue between multiple and competing traditions of thought and problem-solving.

Ethics and Social Responsibility (1 CU)

Big Questions (1 CU)

Global Exposure (Non-credit Bearing)

INDIVIDUALISED MAJOR CORE & ELECTIVES (16 CUs)

Students can opt to pursue the Professional Track or the Research Track:

(A)PROFESSIONAL TRACK

- Emphasis on workplace readiness and industry experiential learning
- High exposure to industry and societal problems, enabling students to better bridge the gap between their university studies and future employment

INDIVIDUALISED MAJOR CORE (4 CUs)

- Introduction to Research Methods
- Introduction to Sustainability: an Interdisciplinary Approach
- Modern Challenges
- Digital Asia

INDUSTRY EXPERIENTIAL LEARNING (2 to 4 CUs)

- SMU-X (including SMU-XO)
- Work-Study Elective(s)

COURSEWORK ELECTIVES (6 to 9 CUs)

CIS students may select courses relevant to their self-defined major, including additional SMU-X courses.

CAPSTONE PROJECT (1 to 2 CUs)

Application of learning into an industry-relevant project.

(B)RESEARCH TRACK

- Deep academic inquiry
- Suitable for students with an interest in a policy, research or academic-oriented career.

INDIVIDUALISED MAJOR CORE (4 CUs)

- Introduction to Research Methods
- Introduction to Sustainability: an Interdisciplinary Approach
- Modern Challenges
- Digital Asia

SMU-X (1 CU)

COURSEWORK ELECTIVES (9 CUs)

CIS students may select courses relevant to their self-defined major, including additional SMU-X courses.

DISSERTATION (2 CUs)

Academic inquiry into a topic of interest.

FREE ELECTIVES (8 CUs)

Students may take courses from any of SMU's schools to fulfil the Free Electives requirement.

Additional Graduation Requirements – Asia Studies and Singapore Studies

Students will be able to fulfil the Asia Studies graduation requirement through Economics and Society (wef AY21/22) and the Singapore Studies requirement through Big Questions (wef AY20/21). Students may delve deeper into these topics through a curated list of courses from the Core Curriculum and disciplinary curriculum, as well as co-curricular activities.

3 INDIVIDUALISED SECOND MAJOR

Students who are from other SMU Schools and in their first or second year of study can also have the option of designing an unconventional major that supplements their primary degree programme.

As with the Individualised Major, students who pursue an Individualised Second Major can choose between the Professional Track and Research Track and will be assigned a Faculty Advisor and an Industry Mentor*.

* Students on the Professional track will be assigned an Industry Mentor in addition to the Faculty Advisor.

REQUIREMENTS

PROFESSIONAL TRACK

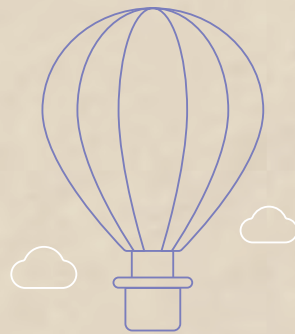
Coursework Electives (6 CUs or 7 CUs)

Capstone Project (1 CUs or 2 CUs)

RESEARCH TRACK

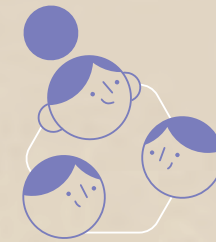
Coursework Electives (6 CUs)

Dissertation (2 CUs)



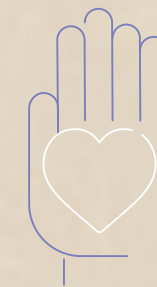
GLOBAL EXPOSURE

At SMU, we aspire to have 100% of our students embark on at least one global experience before graduating. As businesses and organisations spread their operations across international borders, graduates with global exposure will benefit from their prior experiences interacting with people of different cultures and nationalities. SMU provides numerous opportunities for students to broaden their horizons and experience different learning environments through its robust overseas exchange programmes, internships, study missions and community service projects. To make sure no student misses out on this precious global experience, the University is committed to giving global exposure participation an extra push by enhancing support and by providing more (and new) opportunities for students.



OVERSEAS EXCHANGE PROGRAMME

Studying overseas can have positive impact on a student's personal and professional growth as it provides students with an enriching cultural and academic experience like no other. All exchange applicants will be assured of a placement in a university abroad. Our list of partner universities for exchange currently exceed 240 and cover different regions and continents.



COMMUNITY SERVICE

Community service, which falls under the Communities Pillar of the SMU Core Curriculum, requires students to serve a minimum of 80 hours or two weeks of community service, either locally or abroad. Through the community service programme, you will develop social responsibility and empathy for the less fortunate through your involvement in community service projects. Many of our students appreciate the value of engaging in community service and voluntarily clock beyond the stipulated 80 hours.

BE TRANSFORMED BY THE SMU EXPERIENCE

“... this College, with its deferred declaration of degree, and ‘design your own’ major, will be able to provide the students with the flexibility to explore and make informed decisions about their major, and also ensure that their major is relevant and closely aligned to an industry need.”

Mr Piyush Gupta
Chief Executive Officer, DBS

“The College of Integrative Studies marks another first. It illustrates SMU's spirit of delivering innovative education, through integrative learning, to prepare its students for the world of work that is rapidly evolving. With the formation of the CIS, students will now have the option to customise their majors, selecting from the full suite of courses offered across SMU's Schools. The College redefines “specialisation” with a modern, integrative lens... By doing so, it is envisioned that students will learn to connect ideas and perspectives, find fresh solutions to address industry or societal challenges, and be equipped to contribute uniquely to the frontier industries of tomorrow.”

Mr Chan Chun Sing
Minister for Education



HEAR WHAT OUR INDIVIDUALISED SECOND MAJOR STUDENTS HAVE TO SAY

“I undertook the ISM programme as I was torn between multiple second majors offered – an Individualised Second Major allowed me to integrate the best of everything together! It has been a wonderful experience, being in the programme has provided numerous opportunities such as being able to attend Fireside Chats with prominent figures and coffee chat sessions with the CIS Dean amongst other things. My mentor, Professor Giovanni, has also been extremely supportive and open to questions and consults ever since the initial admission – along with the rest of the CIS faculty, you can truly feel every single member’s passion to develop and help students and this has truly been one of the factors that differentiates the school!”

Jonathan Gan Jing Heng, Year 2 student
Lee Kong Chian School of Business | College of Integrative Studies

UNPARALLELED MENTORSHIP STRUCTURE: ONE-TO-ONE ADVISEMENT BY FACULTY ADVISOR AND INDUSTRY MENTOR

Every student taking the Individualised Major or Individualised Second Major will benefit from one-to-one guidance and advice from a specially assigned Faculty Advisor. Students who choose to pursue the Professional Track will also be paired with an industry mentor who will help them integrate their coursework learning with real industry applications and understand the context, nuances, complexities and outlook of the industry, preparing the student for their transition to work.

“Mentoring students, by drawing on an interdisciplinary and integrative approach to education, helps them understand more than the sum of parts. Join us to be immersed in our uniquely collegial and welcoming environment.”

Aidan Wong
Assistant Professor of Urban Studies (Education)

“Coming across the Individualised Second Major (ISM) programme, I wanted to finally build upon my technical skills I have received from my first major (Smart City Management and Technology) by learning more about human societies, and their relationship with technology and the natural world. From the ISM programme, I was unconfined to the modules that were unavailable to me with my first major! Besides modules from SCIS, I also got to customise my second major by picking modules from CIS, LKCSB, and SOSS to build my own second major, including the creation of its name - Sustainable Technologies. This allowed me to gain more control in my own learning, resulting in a more holistic perspective on sustainability and the implementation of technology. And of course - being part of this programme - I have met many talented, intelligent, and welcoming people (both peers and profs!) who are willing to share about their passions - and the critical problems they want to see solved in the world.”

Kango Lee Zhen Xiong, Year 2 student
School of Computing and Information Systems | College of Integrative Studies

“As someone interested in so many different disciplines and topics, CIS gave me the opportunity to integrate them together while ensuring that it is applicable to the real world. Taking charge of building my own second major has challenged me to approach issues and topics from a multidisciplinary perspective, giving me a more holistic view of the working world. My faculty advisor provides me with a nurturing and safe place to discover my passions while also providing me with the (much-needed) advice to navigate the outside world.”

Lauren Angelina Koek Tsui Lyn, Year 2 student
School of Computing and Information Systems | College of Integrative Studies



“I am a geographer who is also an environmental biologist, urban planner, and development studies scholar. My research leads me to the labyrinthine halls of bureaucracies managing places ranging from megacities to South Asian rural villages. I marvel at the magnificent forests, blissful beaches, intimidating mountains and most soft and furry creatures living in them.”

Sangeeta Banerji
Assistant Professor, Urban Studies



“I am a computer scientist, investigating the ways AI can help us plan responsibly in the face of uncertain futures. As a teacher I believe in making cutting edge technical knowledge accessible to all students. Make sure to get your coffee order in if you’re coming to my office for a consultation!”

Jonathan Chase
Assistant Professor (Practice),
Computer Science



“I study how cities affect climate and how climate change affects cities from an interdisciplinary perspective. I’ve also been looking into ways to cool Singapore (without using air conditioning!) as the world gets warmer. I play too much chess for my own good.”

Winston Chow
Associate Professor, Urban Climate



“I am a legal scholar who is interested in how constitutions work (or fail to) and the role of courts in this regard, focusing mainly on Asia and Europe. I’m an emphatic educator who has taught for almost 20 years at undergraduate and postgraduate levels.”

Maartje De Visser
Associate Professor, Law



“My expertise is on Southeast Asian Studies and I work on the intersections of cinema, dance, and cultural studies, international relations, diplomacy, and history. My latest research project explores the ballet performances of the Cambodian Royal Ballet Corps in the West as instruments of diplomacy and foreign relations.”

Darlene Espena
Assistant Professor (Education), Southeast Asian Studies



“I am an economist who studies urban, housing, and environmental issues, with a focus on the Singapore market. I have taught economics and data analysis for nearly 14 years. In my free time, I like to listen to fantasy audiobooks, watch baseball, and learn Python.”

Eric Fesselmeyer
Assistant Professor (Education), Economics

MEET YOUR FACULTY

ADVISORS

**WORLD
CLASS
FACULTY**



“I am a political theorist specialising in French liberal thought, and my career as a scholar and educator has been devoted to interdisciplinary learning. I also work on politics and literature — partly because it justifies reading too many novels. When not teaching, I’m probably cooking...or thinking about what to cook.”

Christine Dunn Henderson
Associate Professor, Political Science



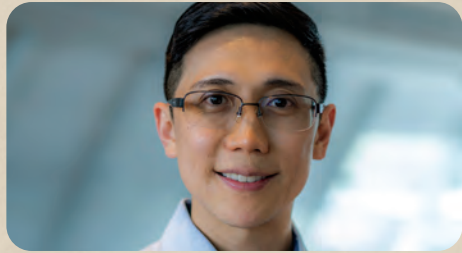
“I use quantative data and statistical methods to answer questions about economics, politics and law. Over the past ten years, I have supervised dozens of year-long student projects. I have lived in five countries and enjoy learning languages, both natural and programming ones.”

Giovanni Ko
Assistant Professor (Education), Economics



“I teach at the intersection of computer science, humanity and societal challenges. Am reflective by nature and personable. I rejuvenate and find inspiration in nature.”

Andrew Koh
Senior Lecturer, Computer Science



“I study how ideas and political institutions intersect and produce structures that shape human behaviour. In the classroom, I believe that there is no meaningful distinction between teaching and learning. Similarly in life, I appreciate non-duality as a cosmic joke – I love dogs and am allergic to them.”

Elvin Lim
Professor, Political Science



“I am always intrigued by how people engage with technology and constantly mulling over the unfolding relationship between AI and humanity. I have an 829-day streak on Duolingo and counting!”

Lim Sun Sun
Professor, Communication and Technology



“I’m a philosopher of science. I try to make sense of what our best scientific theories are telling us about the world. I have taught and advised students in Australia, Canada, Germany, Singapore, and the United States over the past 11 years. I enjoy traveling, coffee, and traveling in search of amazing coffee.”

Joshua Luczak
Assistant Professor (Education), Philosophy



“I am an Economist who believes that Economics can become your favourite subject. I have over 20 years of teaching experience over 3 continents. In my free time, I run the biggest Economics YouTube channel of Greece with more than 85K subs and 3.5 million views and counting.”

Kosmas Marinakis
Senior Lecturer, Economics



“My research interests revolve around the interdisciplinary study of religion and cinema. Before joining SMU, I worked in China, studied in Japan, and lived in the U.S. for many years. On weekends, I enjoy hiking around Singapore with my wife and dog.”

Ng Teng Kuan
Assistant Professor, Religious Studies



“I am a historian of US-Southeast Asian relations from the mid-twentieth century to the present. My research explores how the intersection of decolonization and the Cold War in Southeast Asia, as well as global transformations such as the War on Terror and the rise of China have shaped the Asian regional order. Also, I like Star Wars!”

Ngoei Wen-Qing
Assistant Professor, History



“I research on a variety of topics, including wisdom, epistemic environments, and paternalism, and have been published by leading international philosophy journals and university presses. Two of my current projects are to examine how epistemic environments might be designed to facilitate the development of wisdom and how perceptions of epistemic coverage can influence the consumption of fake news.”

Shane Ryan
Assistant Professor (Education), Philosophy



“I’m a lawyer. My specialities are emerging technologies and fake news. I nearly didn’t become a lawyer because my dad wanted to enrol me into a football academy; my dialect name is inspired by a legendary Malaysian footballer!”

Daniel Seah
Assistant Professor (Education), Law



“My background is in English Literature. I research and teach on literary exchange between Asia and Europe – including Singaporean interpretations of Shakespeare!”

Emily Soon
Lecturer, English Literature



“I work on the environmental and climatic history of Singapore and Malaysia, I am especially interested in how the interrelated dynamics of weather and environmental changes have shaped urban/social risk and resilience, past, present and future. When I am not buried in the past, I enjoy running and hanging out at the gym.”

Fiona Clare Williamson
Associate Professor, Environmental History



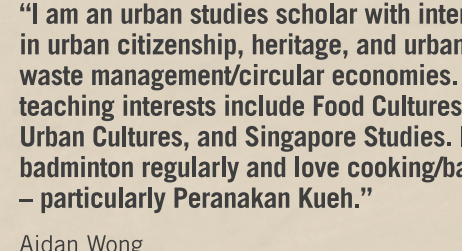
“I am a science studies scholar researching the history of the life sciences in the twentieth century in aquatic spaces. I teach courses in biomedicine and biotechnology. Look for me at the Prinsep St Residences – I’m the Lead Faculty Fellow at PSR!”

Park Haesoo
Assistant Professor (Education), Science, Technology & Society



“I am a historian of science and technology exploring social aspects of global digital technologies and the politics of scientific organization under capitalism and socialism. I have previously taught in the US, China, and Europe. After classes, I like watching films and spending time on a yoga mat.”

Ksenia Tatarchenko
Assistant Professor, Science, Technology & Society



“I am an urban studies scholar with interests in urban citizenship, heritage, and urban waste management/circular economies. My teaching interests include Food Cultures, Urban Cultures, and Singapore Studies. I play badminton regularly and love cooking/baking – particularly Peranakan Kueh.”

Aidan Wong
Assistant Professor (Education), Urban Studies



“I am an applied microeconomic and game theorist interested in incentives within teams and in territorial disputes. I have been teaching for more than 20 years. At various times in my childhood I wanted to be an astronaut, a palaeontologist, a journalist, and a historical romance author.”

Nona Pepito
Assistant Professor (Education), Economics



“I am a religion and culture scholar whose research focuses on Pacific Rim societies. I have experience supervising directed studies and theses on mental health discourse, transpacific communities, and spirituality in a secular age. I have a Breath of the Wild poster in my office but actually ended my Zelda career with Ocarina of Time.”

Justin Tse
Assistant Professor (Education), Religion and Culture



“Drawing on a background in cultural anthropology and human geography, I study how efforts to make infrastructural systems more climate resilient transform material flows and urban lives. I've got a soft spot for desert hot springs, speculative fiction, and wild pigs, and am eagerly anticipating the day I encounter a book that combines all three.”

Sayd Randle, Assistant Professor, Urban Studies



“I am an interdisciplinary social scientist interested in how individuals and institutions respond to sustainability challenges. My [current] favourite research project involves simulating worst-case scenario climate change disasters in virtual reality and seeing how people respond. Prior to joining SMU, I taught at the University of Hong Kong and Cambridge University.”

Terry Van Gevelt
Assistant Professor, Urban Sustainability

IMPACTFUL INTERDISCIPLINARY



Associate Professor Winston Chow is leading the Cooling Singapore 2.0 multi-disciplinary research. One of the projects under this ambit aims to build a Digital Urban Climate Twin (DUCT) in Singapore through the integration of relevant computational models (environmental, land surface, industrial, traffic, building energy), as well as regional and micro-scale climate models to enable urban planners and policymakers to develop solutions that address the urban heat challenge in Singapore.



Assistant Professor Jonathan Chase is a collaborator on a study researching supply chain disruption, from 'Black Swan' events like the COVID-19 pandemic, to more common issues such as labour disputes and adverse weather conditions, can these result in delays, missed orders, and financial loss for companies that deliver products globally. Working with a large electronics manufacturing organisation to ensure a realistic and practical approach, the team developed a supplier-focused procurement optimization strategy, to create a risk-tolerant and cost-effective approach for a global supply chain.



Assistant Professor Ngoei Wen-Qing is currently pursuing two research projects that build from his earlier work on the history of US Cold War policy, decolonization, and imperial transition in Southeast Asia. One of these is a study of how Southeast Asian culture-makers – novelists, playwrights, artists, for example – influenced the region's foreign relations from the 1970s through the 1990s. His second project examines how Singapore-superpower relations shaped the Southeast Asian regional order from the 1980s into the present.

RESEARCH @ CIS



Associate Professor Fiona Williamson and Assistant Professor Justin Tse are collaborating on a research project titled "The 'Other' Garden City: Documenting Singapore's Edible Gardening Heritage". Spanning approximately two hundred years of Singapore's modern history, this study will initiate a first step towards the inclusion of vernacular gardening practices as part of Singapore's Intangible Cultural Heritage Inventory, in line with the 2018 SG Heritage plan and, catalyze the writing of a new environmental history of Singapore, one which places ordinary people and practices in the foreground.



Assistant Professor Aidan Wong is working with the Ministry of Sustainability and the Environment (MSE) on a 5-year longitudinal study to quantify and qualify the economic and environmental impact of the Extended Producer Responsibility (EPR) framework for e-waste in Singapore. The findings of the study will aid MSE in assessing the effectiveness of the e-waste EPR in Singapore, facilitating the review and refinement of its policy framework for future phases.



Associate Professor Orlando Woods is working on a project titled "Technocratic Regionalism in Southeast Asia: The Translational Politics of Smart City Knowledge Transfer" that explores the development of smart cities in Southeast Asia and how the implementation of digital technologies designed to manage urban processes leads to the emergence of "technocratic regionalism" through which power and inequality are (re)produced.

PREPARING YOU FOR YOUR CAREER



INDUSTRY IMMERSIVE EXPERIENCE

Every CIS student will receive and undergo an Industry Immersive Experience as part of their undergraduate education. Whether a student chooses to embark on the Professional Track or Research Track, CIS has lined up an exquisite lineup of industry engagement opportunities for the CIS students, including regular Fireside Chats with industry leaders and exclusive interviews and coffee chats with C-suite industry captains. Every student will also complete at least one SMU-X course, working directly with an industry partner on a real industry problem. The Bachelor of Integrative Studies is individualised, integrative, authentic, and intricately relevant to the industry.

Finishing Touch

All SMU students complete the Finishing Touch Programme, one of SMU's distinguishing factors in honing its graduates throughout their education journey towards career management and success. The seven compulsory workshops, conducted during your first two years, give you more time to learn, assimilate and apply career-related knowledge and skills. Optional workshops are offered in your third and fourth years at the crucial job application stage.

A SAMPLE OF
VARIOUS CAREER
PATHS FOR SMU
CIS GRADUATES

CORPORATE SUSTAINABILITY

MANAGEMENT CONSULTANCY

INVESTMENT ANALYST

DATA SCIENCE

DIGITAL MARKETING

BIOTECHNOLOGY

LEGAL OR REGULATORY
CONSULTANCY AND ADVISORY WORK

GOVERNMENT AND
PUBLIC SERVICE

RESEARCH ASSOCIATE



CAREER PROSPECTS

Unlike graduates of some professional schools where there is a more predictable pathway and modal employment outcome, CIS graduates will chart their own path, and will be particularly well-placed to take up employment in the frontier roles of modern industries. With the guidance of a dedicated advisor and/or industry mentor, they will make a concerted and conscious mapping of their interests and major with industry needs. CIS graduates will be well placed to excel in any industry or employment role of their choice, including large multinational firms, government agencies, start-ups, green industries, finance, and digital industries.

CIS ADVISORY BOARD

CIS is excited to have secured a distinguished College Advisory Board representing many different industries, as well as the public sector.



**EDMUND LIN
(CHAIRPERSON)**
Chairman of Southeast Asia,
Bain & Company



**SANDHYA
DEVANATHAN**
Vice President,
India, Meta



FANG EU-LIN
Partner, PwC Singapore



HIAN GOH
Founder & General Partner,
Openspace Ventures



KENNETH KWEK
Chief Executive Officer,
Singapore General Hospital



LEW CHUEN HONG
Chief Executive,
Infocomm Media
Development Authority



LOH WEE LEE
Chief Executive Officer,
Lazada Singapore



ONG TZE CH'IN
2 Deputy Secretary,
Ministry of Sustainability
and the Environment



DENNIS TAN
Chief Executive Officer,
Prudential Singapore



TEO LAY LIM
Chief Executive Officer,
SPH Media



KELVIN WONG
Partner, Allen &
Gledhill LLP

